

Balanced Seal

High Pressure, Heavy Duty Seal, Single Acting, Independent of Direction of Rotation

Mechanical Seal Series 900B/CG

Standard Style

Face Materials:

Carbon / Silicon Carbide

Carbon / Tungsten Carbide

Silicon Carbide / Silicon Carbide

Metal Parts:

SS 316, SS 304, Hastelloy-C,

Titanium, Alloy-20, Monel

Secondary Seal:

Elastomers

Applications:

- Oil Pipeline Pumps
- Boiler Feed Water Pumps

Seal Characteristics:

- Single acting
- Balanced
- Inside mounted
- Independent of direction of rotation
- Multiple springs design
- Sturdy drive mechanism

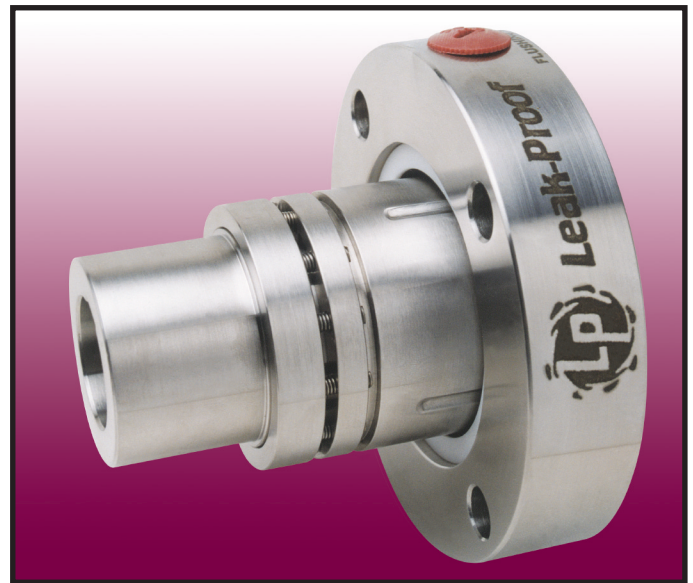
Operating Limits:

Shaft diameter d1 : 25.....115 mm

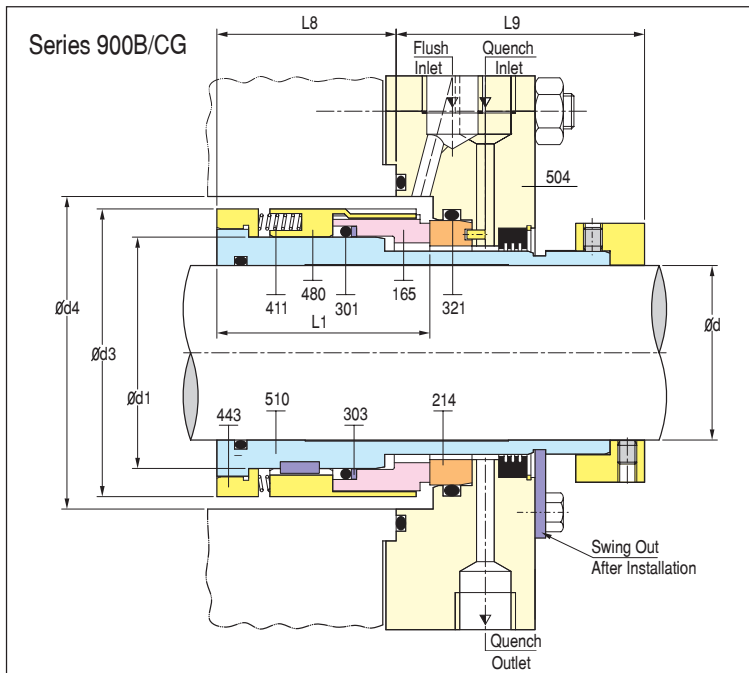
Pressure p : 25.....150 bar

Temperature t : - 40.....180° C

Velocity v : 20 m/sec



Series 900B/CG is specially designed cartridge seal for pumps handling oil, water and other fluids which are being pumped at very high pressure. These seals are widely used on pipe & Boiler feed water pumps. Very sturdy design and drive arrangement makes the seal suitable for very high pressure. This being multiple spring seal, it provides uniform face loading.



Part No.	Description
165	Seal Ring
214	Mating Ring
301	O - Ring
303	Back-up Ring
321	O - Ring
411	Spring
443	Spring holder
480	Retainer
504	Gland
510	Sleeve

SHAFT d	SEAL SIZE d1		d3	d4	L1	L8	L9
	inch	mm					
25.40	1.437	36.50	54.0	58.0	59.5	48.0	75.0
28.58	1.625	41.28	57.5	61.5	59.5	48.0	75.0
31.75	1.750	44.45	60.5	64.5	59.5	48.0	75.0
34.92	1.875	47.62	63.5	67.5	59.5	48.0	75.0
38.10	2.000	50.80	67.0	71.0	59.5	48.0	75.0
41.28	2.125	53.98	70.0	74.0	59.5	48.0	75.0
44.45	2.250	57.15	73.0	77.0	59.5	48.0	75.0
47.62	2.375	60.32	76.5	80.5	59.5	50.0	75.0
50.80	2.500	63.50	79.5	83.5	59.5	50.0	75.0
53.98	2.625	66.68	86.0	90.0	64.5	53.0	79.0
57.15	2.750	69.85	89.0	93.0	64.5	53.0	79.0
60.32	2.875	73.02	92.5	96.5	64.5	53.0	79.0
63.50	3.000	76.20	95.5	99.5	64.5	53.0	79.0
66.68	3.125	79.38	98.5	102.5	64.5	53.0	79.0
69.85	3.250	82.55	102.0	106.0	64.5	53.0	79.0
73.02	3.375	85.72	105.0	109.0	64.5	56.0	79.0
76.20	3.500	88.90	108.0	112.0	64.5	56.0	90.0
79.37	3.875	98.42	116.0	120.0	69.5	56.0	90.0
82.55	4.000	101.60	119.0	123.0	69.5	56.0	90.0
85.72	4.125	104.78	122.5	126.5	69.5	56.0	90.0
88.90	4.250	107.95	125.5	130.5	69.5	56.0	90.0
92.07	4.375	111.13	129.0	134.0	69.5	56.0	90.0
95.25	4.500	114.30	132.0	137.0	69.5	56.0	90.0
98.42	4.625	117.48	135.0	140.0	69.5	56.0	90.0
101.60	4.750	120.65	138.5	143.5	69.5	56.0	90.0
104.77	4.875	123.83	146.5	151.5	74.0	60.5	90.0
107.95	5.000	127.00	149.5	154.5	74.0	60.5	90.0
111.12	5.125	130.18	152.5	157.5	74.0	60.5	90.0
114.30	5.250	133.35	156.0	161.0	74.0	60.5	90.0