

Dry Running Seal, For Top Entry Agitators, Vessels and Mixers Single Acting, Independent of Direction of Rotation

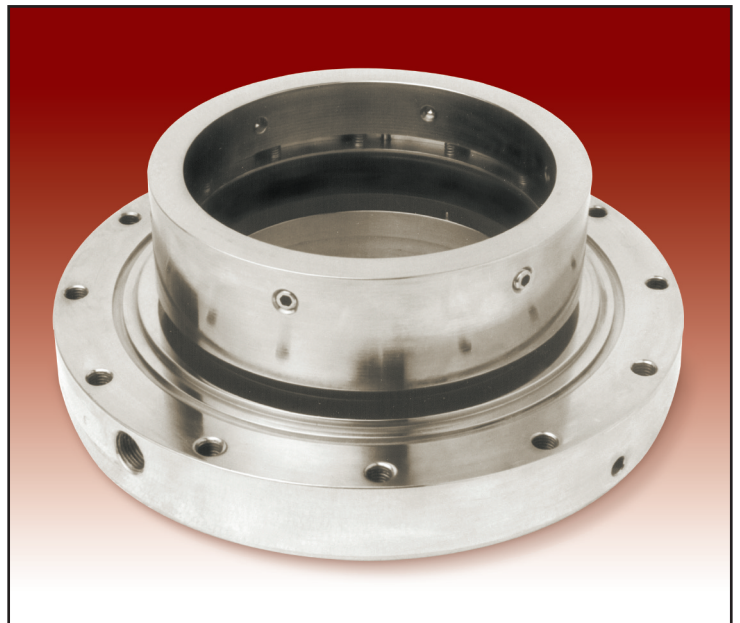
Mechanical Seal Series 88B2A/DG

Standard Style

Face Materials :
Carbon / Silicon Carbide

Metal Parts :
SS 316, SS 304, Hastelloy - C,
Hastelloy - B, Monel, Alloy - 20

Secondary Seal :
Elastomers, TCV



Applications:

- Food Products
- Pharmaceutical Products

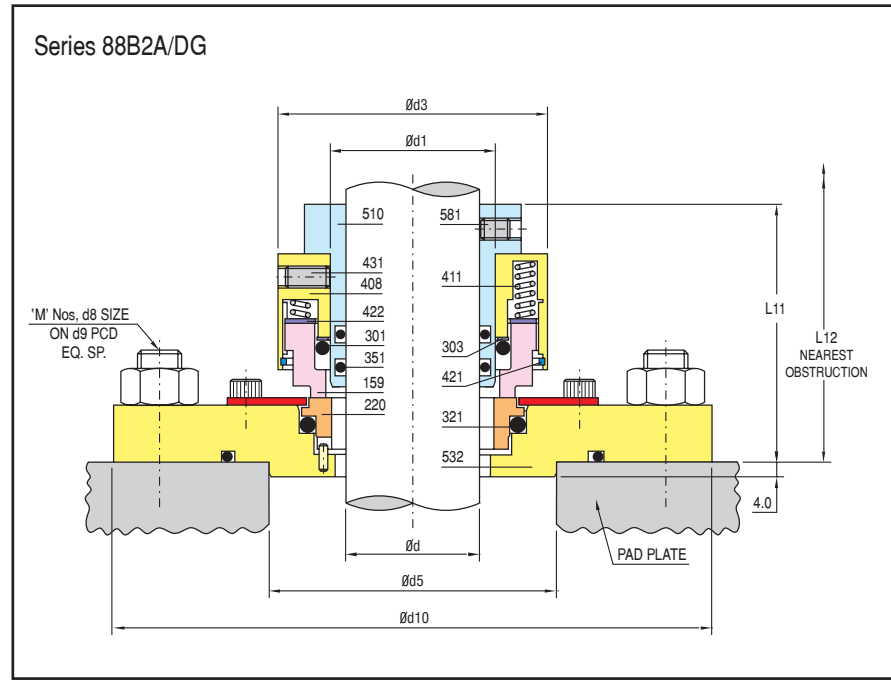
Seal Characteristics:

- Single acting
- Reverse Balanced
- Outside Mounted
- Independent of Direction of Rotation
- Dry Running

Operating Limits:

Shaft diameter d : 15 ...150mm*
Pressure p : Vacuum 8 bar (max)
Temperature t : Amb. 120° C (max)
Speed n : 320 rpm

Series 88B2A/DG is factory assembled & dynamically tested seal for steel, glass lined and SS mixers, agitator & vessels. This is a multiple spring externally mounted, reverse balanced seal with O-ring as secondary sealing member. Various elastomers can be offered for wide service application. These seals are basically used on top entry agitators as dry running seals. When food products or pharmaceutical products are agitated in agitator, mixing of any other liquid will contaminate the product & affect its quality, hence these dry running seals are used. These seals don't require any external media for lubricating the faces, that is why they are known as dry running seals.



Part No. Description

- 159 Seal Ring
- 220 Mating Ring
- 301 O-Ring
- 303 Back-up Ring
- 321 O-Ring
- 351 O-Ring
- 408 Retainer
- 411 Spring
- 421 Snap Ring
- 422 Thrust Ring
- 431 Grub Screw
- 510 Sleeve
- 532 Mating Ring Housing
- 581 Grub Screw

SHAFT d ^{g6}	SEAL SIZE d1 ^{+0.00 -0.05}		d3	d5 ^{H12}	M,d8	d9	d10	L11	L12
	inch	mm							
15.0	1.000	25.40	47.5	40.0	4,M8	90.0	105.0	60.0	95.0
20.0	1.125	28.58	50.7	45.0	4,M8	95.0	110.0	60.0	95.0
25.0	1.375	34.92	58.4	50.0	4,M8	105.0	120.0	65.0	100.0
28.0	1.375	34.92	58.4	60.0	4,M10	115.0	135.0	65.0	100.0
30.0	1.500	38.10	61.6	60.0	4,M10	115.0	135.0	65.0	100.0
35.0	1.750	44.45	71.2	60.0	4,M10	120.0	140.0	80.0	115.0
40.0	2.000	50.80	77.5	70.0	4,M10	130.0	150.0	80.0	115.0
45.0	2.125	53.98	81.2	75.0	4,M10	130.0	150.0	80.0	115.0
50.0	2.375	60.32	87.6	80.0	4,M10	140.0	160.0	80.0	115.0
55.0	2.500	63.50	90.8	85.0	4,M10	145.0	165.0	80.0	115.0
60.0	2.750	69.85	97.1	90.0	4,M10	150.0	170.0	80.0	115.0
65.0	3.000	76.20	103.5	100.0	6,M10	160.0	180.0	80.0	115.0
70.0	3.125	79.38	106.6	105.0	6,M10	165.0	185.0	80.0	115.0
75.0	3.375	85.72	113.0	110.0	6,M10	170.0	190.0	80.0	115.0
80.0	3.500	88.90	116.2	120.0	6,M12	175.0	200.0	80.0	115.0
85.0	3.750	95.25	122.5	130.0	6,M12	185.0	210.0	80.0	115.0
90.0	4.000	101.60	128.9	140.0	8,M12	185.0	210.0	80.0	115.0
95.0	4.125	104.78	132.0	145.0	8,M12	195.0	220.0	85.0	120.0
100.0	4.375	111.12	141.1	145.0	8,M12	200.0	225.0	85.0	120.0
105.0	4.500	114.30	144.2	150.0	8,M12	210.0	235.0	85.0	120.0
110.0	4.750	120.65	152.0	160.0	8,M12	220.0	245.0	85.0	120.0
115.0	5.000	127.00	160.0	165.0	8,M12	225.0	250.0	85.0	120.0
120.0	5.125	130.18	162.0	170.0	8,M12	230.0	255.0	85.0	120.0
125.0	5.375	136.52	169.5	170.0	8,M12	235.0	260.0	85.0	120.0
130.0	5.500	139.70	170.0	175.0	8,M12	240.0	265.0	85.0	120.0
135.0	5.750	146.05	176.0	180.0	8,M12	245.0	270.0	90.0	125.0
140.0	6.000	152.40	183.0	185.0	8,M12	255.0	280.0	90.0	125.0
145.0	6.125	155.58	186.0	190.0	8,M12	260.0	285.0	90.0	125.0
150.0	6.375	161.92	192.0	195.0	8,M12	265.0	290.0	90.0	125.0

*For seal sizes above 150.0 mm consult **Leak-Proof**